



Since 1936, Safway® scaffold has been the industry standard. From Systems™ to Sectional, Tube & Clamp to SafMax®, Motorized access to QuikDeck™, Safway has a full line of products designed for any project.

**Safway Services, LLC**

Corporate Headquarters  
N19 W24200 Riverwood Drive  
Waukesha, WI 53188  
Toll free: (800) 558-4772  
Telephone: (262) 523-6500

**Safway Services Canada, Inc.**

11237 – 87 Avenue  
Fort Saskatchewan, Alberta T8L 2S3 Canada  
Toll free: (866) 842-4424  
Telephone: (780) 992-1929

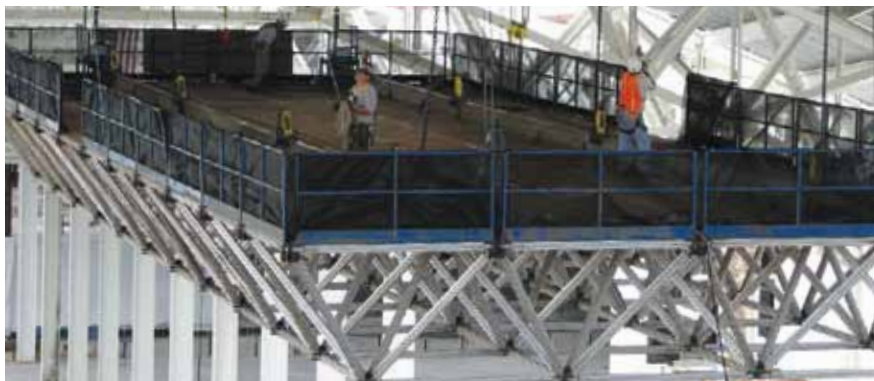
For a list of branch locations in the United States and Canada, visit our website at [www.safway.com](http://www.safway.com)

# Space Frame System

## Suspended Access Solutions



**SFS**



**SAFWAY®**

# Space Frame System



**This page:**  
SFS is used on a variety of applications.

**Facing page (from left to right):**  
SFS in the Snow Dome of the Meadowlands Xanadu; the C-Frame Traveler supports the SFS platform on concrete bridge structures.

With a suspended span up to 100 feet, the Space Frame System is designed to expand your access capabilities without sacrificing simplicity.

## Versatility

Like the other quality products from Safway Services, the Space Frame System (SFS) is designed to simplify your most complex access projects.

The modular platform design of the SFS can be assembled from just a few basic components and configured in 8-foot units to fit most applications.

SFS is designed to provide you with enhanced versatility when time and efficiency are a factor on your jobsite.

- Adjustable stationary suspenders allow close access to work surfaces.
- Folding platform extensions can be lowered for clearing obstacles.
- Traversing platforms can be moved to any location via a platform-mounted track and trolleys.

## Benefits of Suspended Access

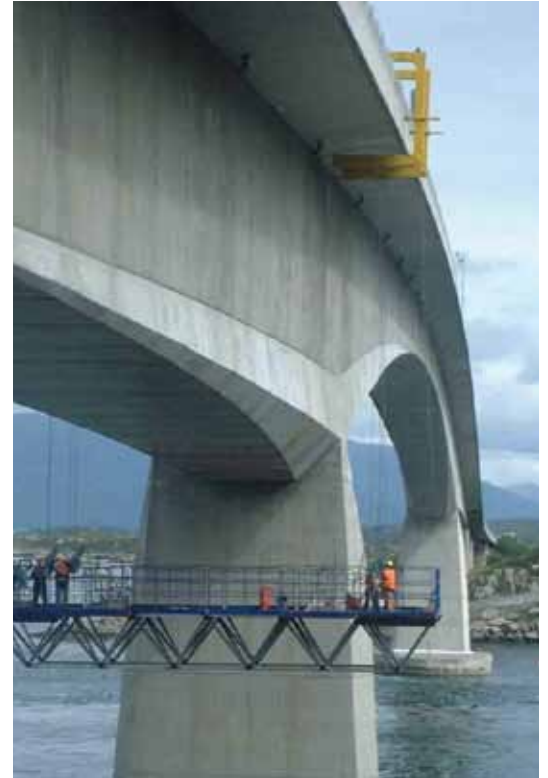
Space Frame platforms can be used for suspended or supported spans up to 100 feet.

For elevated applications, traversing platforms also open up the workspace below for trades or other work to continue as scheduled.

To help ensure a safer, uncluttered work environment, SFS has optional grit or water collection features.

In addition, SFS also offers folding platform extensions, which can be lowered to help clear obstacles, ensuring you and your crew are free from tripping hazards.

Designed primarily for blasting applications, hoppers are mounted within a Space Frame grid.



Grating panels allow grit or water to be collected in the hoppers, leaving crews with open decking free of tripping hazards.

SFS components are conveniently compact for shipping. A 5,000 sq. ft. platform (48' x 104') can be shipped on a single flatbed trailer. Platforms are approximately 8 lbs./sq. ft.

#### Durable Components

The SFS is made up of strong components so you're assured your crews have the safest and most accessible work environment:

- High-strength, extruded aluminum chords are the primary components in SFS. At eight feet long, these modular, lightweight components are designed to last.
- The connecting node is a welded, high-strength steel plate that is painted for corrosion protection.
- Pin connections are made with high-strength steel and secured with heat-treated lynchpins and lanyards.

- Surface decking is  $\frac{3}{4}$ " structural grade plyform that is secured to the support structure.
- The standard railing is an 8-foot, tubular steel railing with an integral kick-plate that is fastened to nodes.

#### Jobsite Safety

Safway is committed to ensuring the safest possible workplace. All locations are supported by regional safety managers and branch safety managers. This support structure provides all branches with a direct point of contact with team support.

The SFS series meets with or exceeds all applicable OSHA safety regulations. Project-specific, supplied documentation outlines Safway's safety procedures.

Field representatives are available to demonstrate the operation and safety of Safway's equipment. Verification of competency and compliance (user signature) are required before equipment release.

## Specifications for standard Space Frame System\*

- Capacity: Up to 150 lbs./sq. ft.\*
- Suspended Span: Up to 100 ft.\*\*
- Unit Weight: Approximately 8 lbs./sq. ft.
- Decking:  $\frac{3}{4}$ " BB OES Structural Grade 1 Plyform

\*Capacity is engineered for each application.

\*\*Load capacity varies with desired span.

Note: The information contained in this document describes the modularity of the system.

Safway will work with you to customize a Space Frame System adapted to fit your needs.